



Working with MEWPs, MCWPs and Hoists safely

COVID-19 Guidance



- This guidance provides practical advice on safety measures to minimise exposure to COVID-19 for anyone planning to use MEWPs, MCWPs or Hoists.
- The measures discussed today are intended to complement and add to the existing workplace risk assessment and control measures, when using a MEWP/MCWP or Hoist. They are not intended to provide general advice for the workplace.
- It assumes the site has existing COVID-19 safety precautions in place.
- All the information is based on current guidance and recognises this advice may change over time as the pandemic progresses through differing stages.

→ This webinar reflects and complements the IPAF guidance document:

“COVID-19 Safe Operating Guidance Using MEWPs, MCWPs or Hoists”



Available at www.ipaf.org/resources

- ➔ Risk assessment
- ➔ Applying a hierarchy of control
- ➔ Behaviours
- ➔ Inspection and maintenance
- ➔ Cleaning
- ➔ Emergency planning
- ➔ On site IPAF training

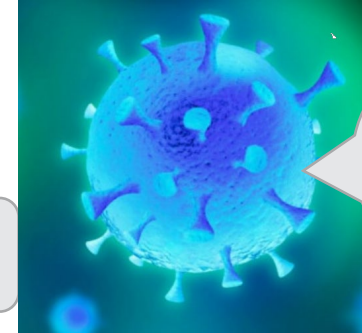


Risk assessment

STEP 1: Identify the hazard

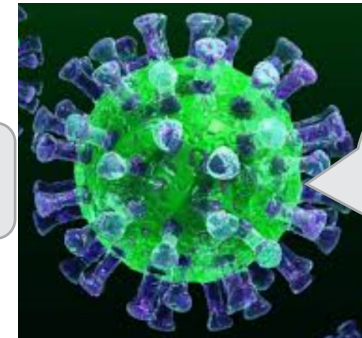
- Coronaviruses are a family of viruses that generally cause disease in animals.
- Occasionally they have transferred to humans.
- 2002-2003 Severe acute respiratory syndrome - SARS
- 2012 - Middle East respiratory syndrome - MERS
- 2020 – Severe acute respiratory syndrome coronavirus 2. (SARS-2)
Coronavirus disease 2019 – COVID - 19

SARS



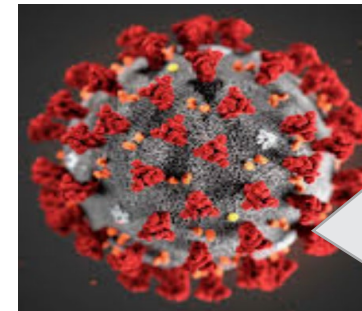
Confirmed cases 8,000
Died 800
Mortality rate 10%

MERS



Confirmed cases 2,500
Died 900
Mortality rate 36%

COVID - 19



Confirmed cases 4.8 m
Died 319,000
Mortality rate 7%

How can COVID – 19 be transmitted?

- It is mainly transmitted through droplets generated when an infected person coughs, sneezes or speaks
- These heavy droplets quickly fall on floors or surfaces
- Individuals can be infected by:
 - breathing in the virus if you are within 1 metre of an infected person
 - by touching a contaminated surface and then touching your eyes, nose or mouth before washing your hands



STEP 2: Decide WHO may be harmed and HOW

- Viruses may persist on differing surfaces from a few hours up to several days



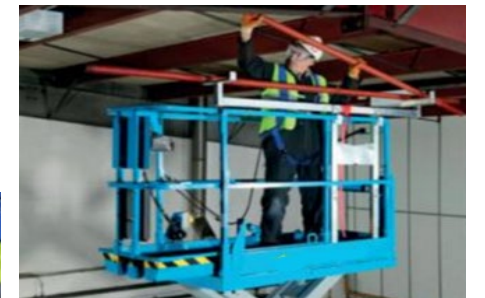
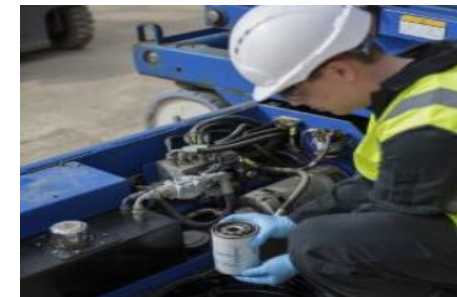
- Essential to assess WHO might be harmed and HOW



STEP 2: Decide WHO may be harmed and HOW

- Ordering - Site survey
- Delivery / installation
- Familiarisation
- Use
- Maintenance
- Collection

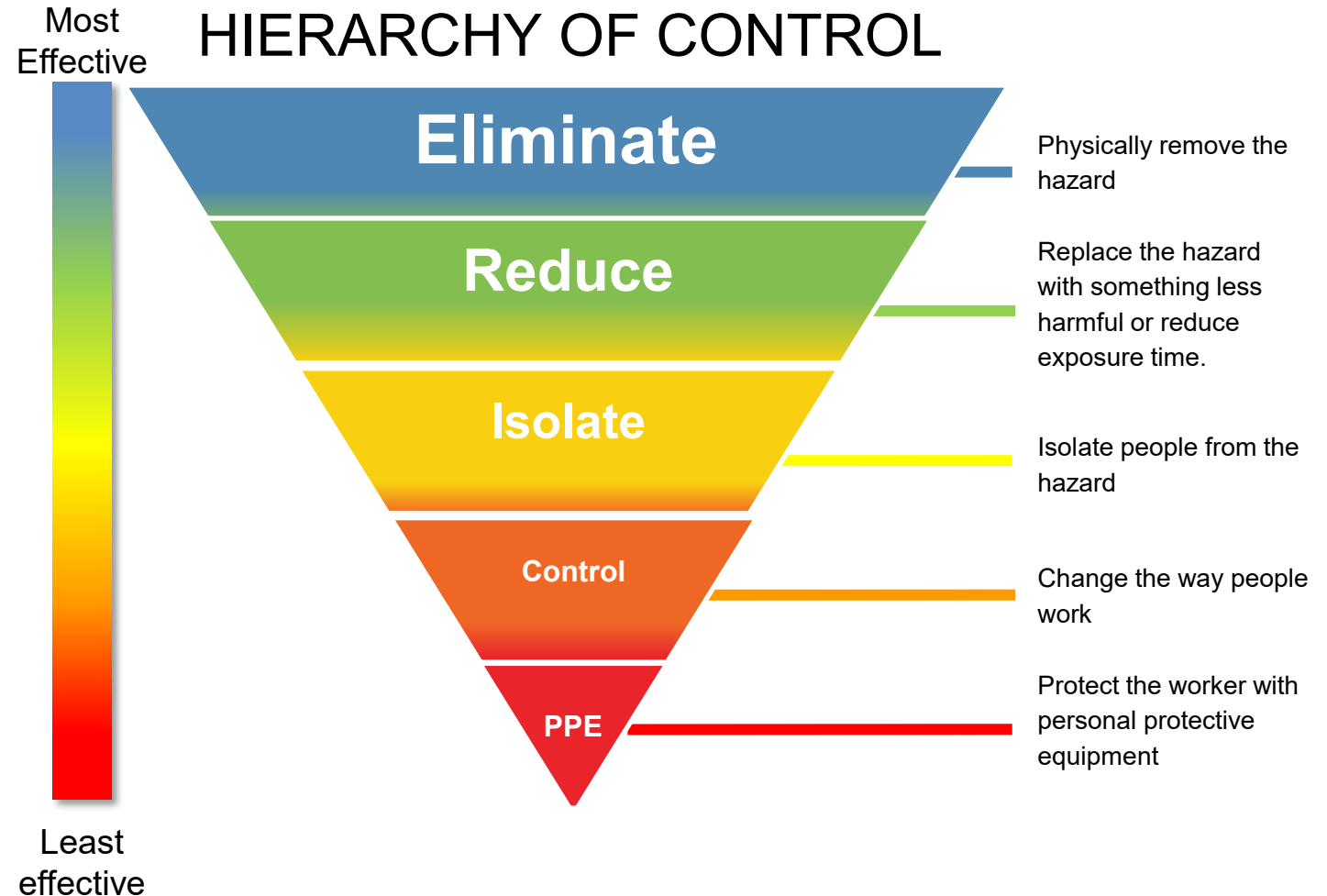
User	Rental Co.
✓	✓
✓	✓
✓	✓
✓	
✓	✓
✓	✓



STEP 3: Evaluate the risk and decided on precautions

- Apply the most effective controls first
- Work down hierarchy of control
- Normal health and safety requirements of any activity must not be compromised

If an activity cannot be undertaken safely, it should not take place.



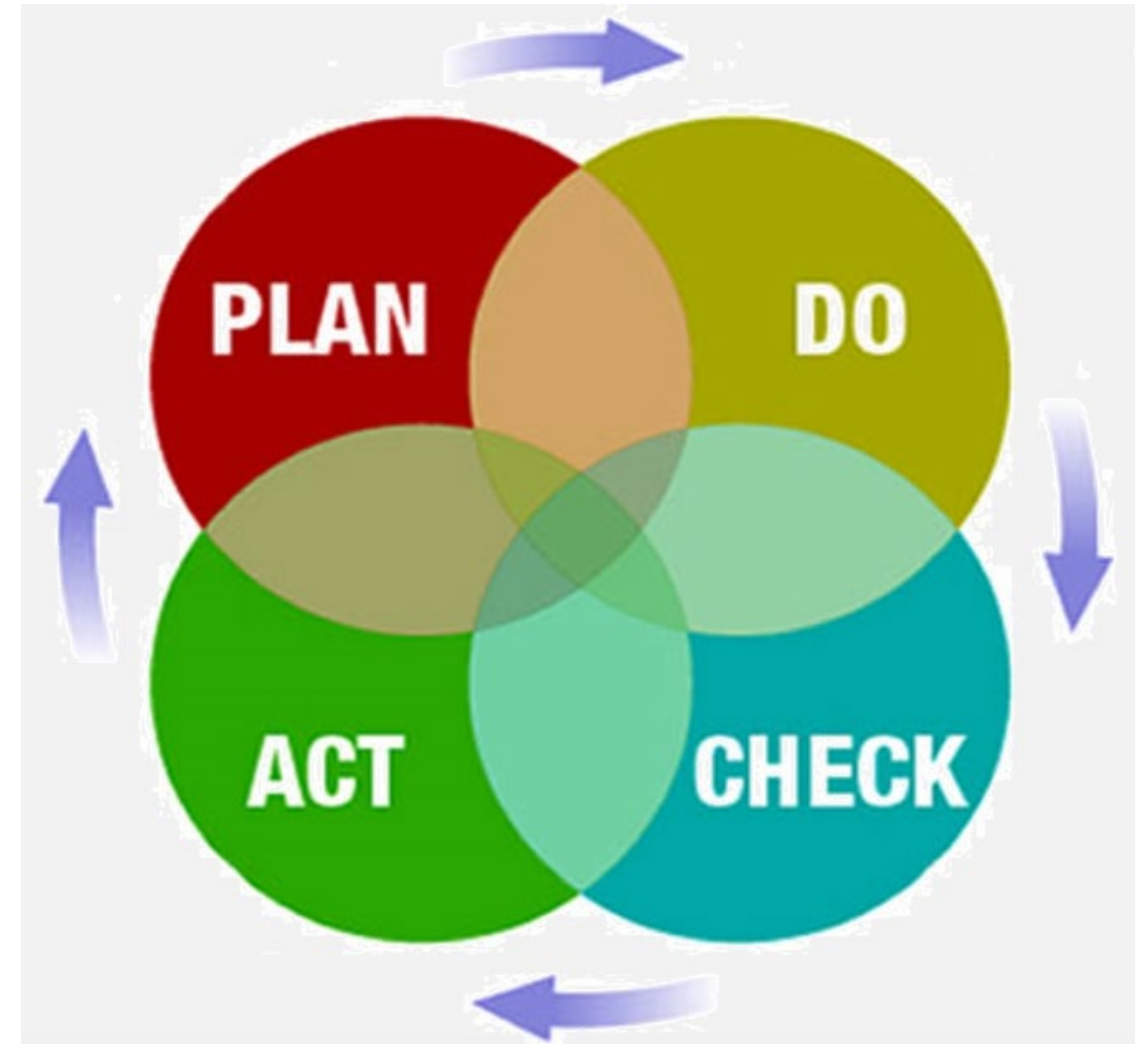
STEP 4: Document and implement precautions

- Communicate
- Co-ordinate and co-operate with others
- Frequent reminders of controls
- Checks for compliance



STEP 5: Review and update as necessary

- Consult and communicate with all interested parties
- Make improvements where possible
- Monitor current advice
- Monitor people's health
- Adapt work methods to changing situations or requirements



Applying the Hierarchy:

- **Eliminate** - Stay at home
- **Reduce** - Limit time in public areas
- **Isolate** - Limit numbers
- **Control** - Social distancing, sanitise
- **PPE** - Gloves, face masks
(Discipline – Fines)

ERICPD

Gradual lifting of lockdown:

Encourage those who cannot work from home to go to work.

Workplaces to follow government guidelines.



- Is the task necessary?
- Must it involve a MEWP / MCWP or Hoist?
- Ensure everyone understands:
 - If showing symptoms
 - Suspected contact with an infected person
 - Vulnerable person



COVID-19 Safe transport and site maintenance practices

Selection of service provider:

- Equipment preparation
- Delivery / installation
- On site maintenance
- Collection

SAFE SYSTEM OF WORK **ABC HIRE**

SSoW Ref 123	COVID-19 Safe transport and maintenance practices	Date introduced	27.03.2020
Produced by	Health and safety department	Date last reviewed	18.05.2020

Introduction
The virus that causes COVID-19 is mainly transmitted through droplets generated when an infected person coughs, sneezes, or speaks. These heavy droplets quickly fall on floors or surfaces. You can be infected by breathing in the virus if you are within 1 metre of a person who has COVID-19, or by touching a contaminated surface and then touching your eyes, nose or mouth before washing your hands. It is not certain how long the virus survives on surfaces, but preliminary information on the COVID-19 virus indicate it may persist on differing surfaces from a few hours up to several days. This safe system of work has been developed to provide guidance and information to drivers and service technicians on how to prevent the spread of the virus and reduce any risk to their health.

References
<https://www.gov.uk/coronavirus>
<https://www.hse.gov.uk/news/coronavirus.htm>
https://www.transport.co.uk/wp-content/uploads/2022/06/Smartman_V_S010976_G08.pdf

Safe Method of Work

All employees:

- = Maintain a safe distance from each other at all times and observe the 2-metre social distancing guidelines;
- = Carrying passengers in service vehicles and lorry cabs is prohibited, as this would contravene the 2-metre rule;
- = Wear disposable latex gloves under regular PPE before working on a machine;
- = Regularly wash hands using soap for at least 20 seconds or use hand sanitiser.

Drivers:
On delivery: - after unloading a machine, use anti-bacterial wipes to clean the areas you have touched e.g. controls, guard rails and entry gate.
On collection: - before loading a machine, use anti-bacterial wipes to clean the areas you may touch e.g. controls, guard rails and entry gate.
On return: from hire - place the machine in the designated return area in preparation for disinfection.

Service technicians:
Prior to commencing inspection, maintenance or repair work on returned hires, the machine must be cleaned using a disinfectant (Gladolux/Spectol V) and cover washed. This is to kill any potential virus present on hard surfaces, of the machine and reduce the risk of contamination.

Specific Requirements
Drivers will not request signature on delivery or collection but record customer's name electronically on the PDA. Wipe door handles, gear levers and steering wheel of service and transport vehicles frequently. If you or any one in your household feels unwell or develops a higher than normal temperature, even if the symptoms are mild, you should stay at home and inform your manager of the situation.

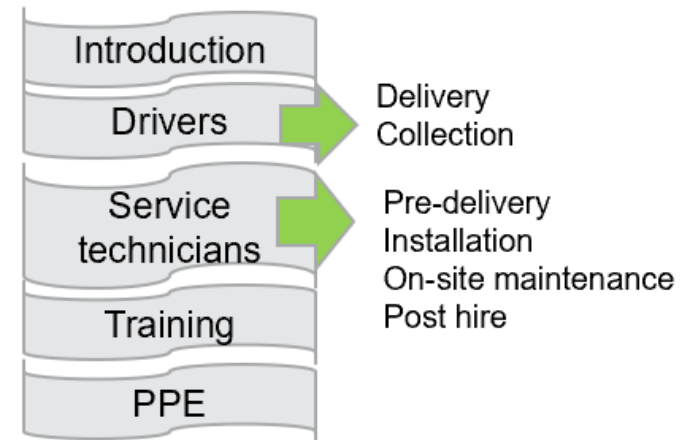
Training
To prevent the spread of COVID-19 and minimise the risk of infection, all active employees are to be made aware of:

- = Social distancing requirements;
- = Good hygiene practices as recommended by Department of Health & Social Care and Public Health England;
- = Specific precautions implemented by Horizon Platforms.

PPE
In addition to all the recognised PPE drivers and service technicians are provided with:

- = Disposable latex gloves - to be worn when in contact with the machine;
- = Anti-bacterial wipes - to wipe potentially infected surfaces and clean surfaces of machine prior to hand-over;
- = Hand sanitiser - to be used after PPE (gloves) have been removed.

Used PPE is to be bagged separately and put in the general waste skip at the depot.



Reduce

Reduce

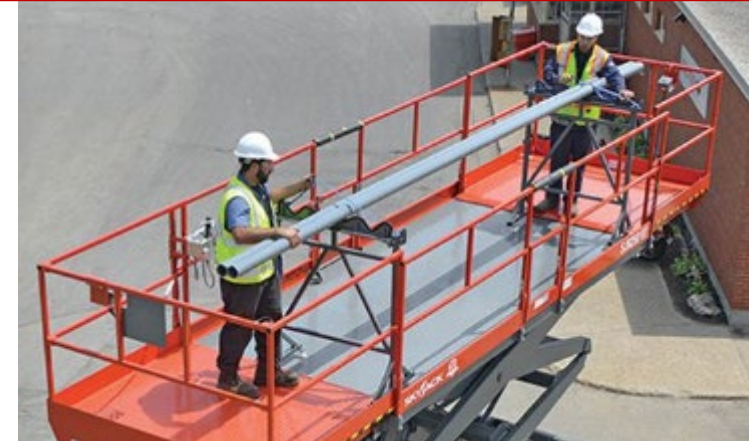
- Minimise participants
- Lower hoist capacities
- Increase ventilation

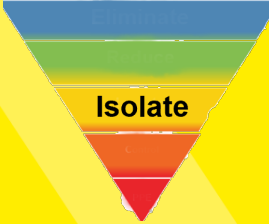
Wash / sanitise hands before and after working on a platform

- Number / length of time on site
- Minimise participants
- Maximise platform size
- Material handling attachments



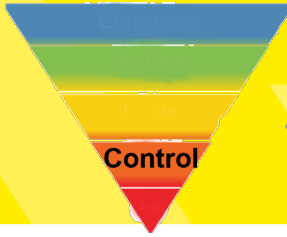
Ensure social distancing of at least 2 metres





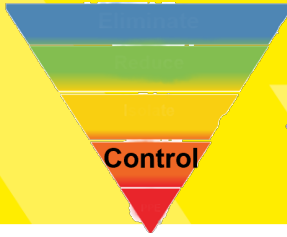
- Delivery / collection point
- Dedicated machine / operator
- Work in teams
- Keep the same workers together in teams
- Own tools and equipment





- Markings / signage
- Sanitise common touch points
- Deliver regular briefings
- Increase supervision
- Stagger breaks and start / finish times



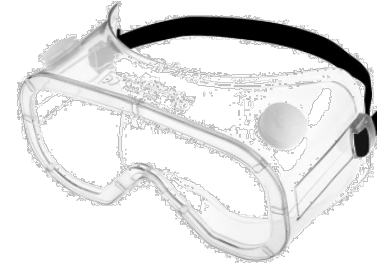


Where the 2 metre social distancing measures cannot be applied in a work platform:

- Is the task essential?
- Minimise frequency and time of tasks
- Limit close working to 15 minutes or less where possible
- Work side by side and avoid face to face situations
- Separate teams from other workers
- Consider using a permit / checklist system



- Consider need for extra PPE
- Respiratory Protective Equipment (RPE) should not be shared
- RPE designed for re-use to be sanitised before and after use
- Dispose of all single use PPE immediately after use
- Suitability and compatibility



- Have own harness and lanyard
- Do not share PPE
- Store clean clothes separately
- Consider wearing disposable gloves
- Provide hand sanitiser and wipes
- Clean PPE regularly



Behaviours

- Influenced by attitudes and values
- Avoid complacency
- Briefings and toolbox talks are important but maintain social distancing
- Involve the workforce in the decision-making and understanding of outcomes



- Collaborate with other teams on site
- Encourage open discussion and sharing of concerns
- Reiterate key requirements



Cleaning

- ➔ Stringent cleaning procedures should be in place throughout the workplace
- ➔ Risk assessments and MSDS information must be reviewed when introducing new cleaning products
- ➔ Hire company procedures



- Intended use
- Hazards
- Storage
- First aid
- PPE

COVID-19 Safe transport and site maintenance practices

SAFE SYSTEM OF WORK		ABC HIRE
Docu Ref 121	COVID-19 Safe transport and maintenance practices	Date: 27.03.2020
Produced by	Health and safety department	Date last reviewed: 18.05.2020
<p>Introduction</p> <p>The virus that causes COVID-19 is mainly transmitted through respiratory droplets generated when an infected person coughs, sneezes, or speaks. These respiratory droplets land on floors or surfaces. You can be infected by breathing in the air, or by touching a surface that has been contaminated with the virus and then touching your eyes, nose or mouth before you wash your hands.</p> <p>A full container may leak the virus on to surfaces, but preliminary information on the COVID-19 virus indicate it may persist on different surfaces from a few hours up to several days. This safe system of work has been developed to provide guidance and information to clean and prepare workplaces on how to prevent the spread of the virus and reduce any risk to your people.</p> <p>References</p> <p>Health and safety department https://www.gov.uk/government/coronavirus https://www.gov.uk/government/coronavirus/coronavirus-symptoms</p> <p>Safe Method of Work</p> <p>All employees:</p> <ul style="list-style-type: none"> • Maintain a safe distance from each other at all times and observe the 2 metre social distancing guidelines; • Avoid handshakes, hugs, kisses, cheek-to-cheek greetings and other close contact with others; • Avoid unnecessary close contact with people who appear to be unwell; • Regularly wash hands using soap for at least 20 seconds or use hand sanitizer. <p>Drivers:</p> <p>SS10022 - after unloading a machine, use antibacterial wipes to clean the areas you have touched e.g. controls, guard rails and tyre caps.</p> <p>SS10020 - before loading a machine, use anti-bacterial wipes to clean the areas you may touch e.g. controls, guard rails and tyre caps.</p> <p>SS10021 - never use the machine in any designated virus-free zone or environment for collection.</p> <p>SS10023 - never use the machine in any designated virus-free zone or environment for collection.</p> <p>Service technicians:</p> <p>Plan for unloading, installation, maintenance or repair work on related hire, the machine must be cleaned using a disinfectant (AUCOPE Disinfectant V1 and power washed. This is to kill any potential virus present on hard surfaces, off the machine and reduce the risk of contamination.</p> <p>Specific Requirements</p> <p>In addition to the required PPE drivers and service technicians are provided with the following:</p> <ul style="list-style-type: none"> • Disinfectant spray bottles - to be used when in contact with the machine; • Hand sanitizer - to be used after PPE (gloves) have been removed; • Wipes - to be used after PPE (gloves) have been removed; • Used PPE to be kept separate and not to be re-used until at the depot. 		

- Introduction
- Drivers
- Service technicians
- Training
- PPE

- Delivery
- Collection
- Pre-delivery
- On-site maintenance
- Post hire

- Machine controls
- Entry and exit points
- Touch points – guard rails
- Ancillary equipment, tools etc

- Sanitise hands

- Increase the frequency of waste removal



Inspection and maintenance

Pre-use inspections

- Requirement to make sure work equipment is safe to use
- Machines left standing may require additional inspection and checks
- Management of defects and availability of breakdown support



Periodic inspections and thorough examinations

- Statutory requirement
- User responsibility to ensure machine is safe to use
- Plan to continue inspections and maintenance
- Protect the service technician



Guidance note for dutyholders and inspectors

Lifting Operations and Lifting Equipment Regulations and
Pressure Systems Safety Regulations

Carrying out thorough examination and testing of lifting and
pressure equipment during the coronavirus outbreak

Introduction

An emerging consequence of the Corona virus pandemic (COVID-19) is the challenges faced by industry in meeting the requirements to complete statutory thorough examination and testing (TE&T) of plant and equipment to meet duties under the Lifting Operations and Lifting Equipment Regulations (LOLER) and Pressure Systems Safety Regulations (PSSR).



Periodic inspections and thorough examinations

- Coordinate with machine provider
- Communicate **in advance**:
 - Availability of equipment
 - Specific site rules
 - How to access the site
 - Contact information



→ When the service technician or engineer attends:

- Provide a designated secure area
- Supply hand sanitiser or washing facilities nearby
- Brief the engineer on routes
- Monitor the welfare of the engineer



Emergency planning

→ Rescue plan

- Ground rescue person
- Current contact information
- Additional COVID-19 precautions













→ High risk activities

- Avoid if possible
- Internal emergency team

→ Resource

- Hand sanitiser, face masks
- Sufficient for potential delays
- Awareness of COVID-19 symptoms

Symptoms	Coronavirus <small>Symptoms range from mild to severe</small>	Cold <small>Gradual onset of symptoms</small>	Flu <small>Abrupt onset of symptoms</small>
 Fever	Common	Rare	Common
 Fatigue	Sometimes	Sometimes	Common
 Cough	Common* (usually dry)	Mild	Common* (usually dry)
 Sneezing	No	Common	No
 Aches and pains	Sometimes	Common	Common
 Runny or stuffy nose	Rare	Common	Sometimes
 Sore throat	Sometimes	Common	Sometimes
 Diarrhea	Rare	No	Sometimes for children
 Headaches	Sometimes	Rare	Common
 Shortness of breath	Sometimes	No	No

Sources: World Health Organization, Centers for Disease Control and Prevention

IPAF training

➔ All training conducted at an IPAF-approved training centre will follow the latest COVID-19 guidance from IPAF

➔ If you choose to undertake training on your site, then additional precautions will be required



- Showing symptoms
- Symptoms within 14 days
- Bring own PPE
- How to enter / exit
- Early arrival



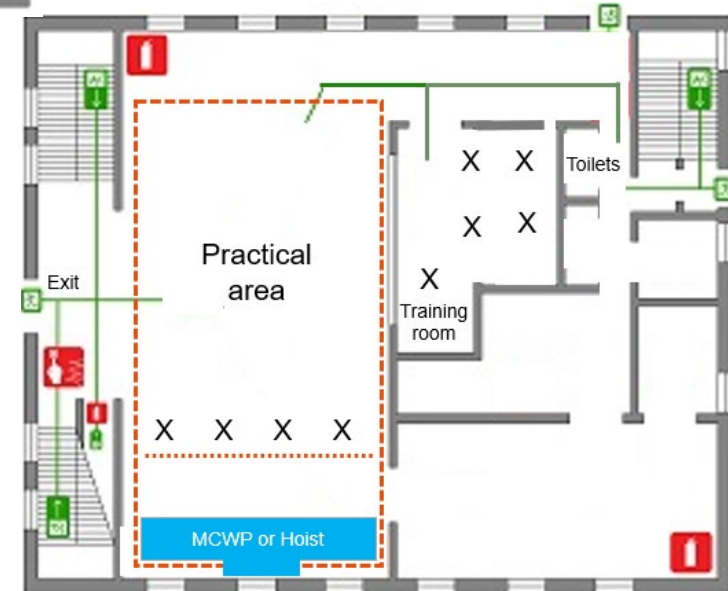
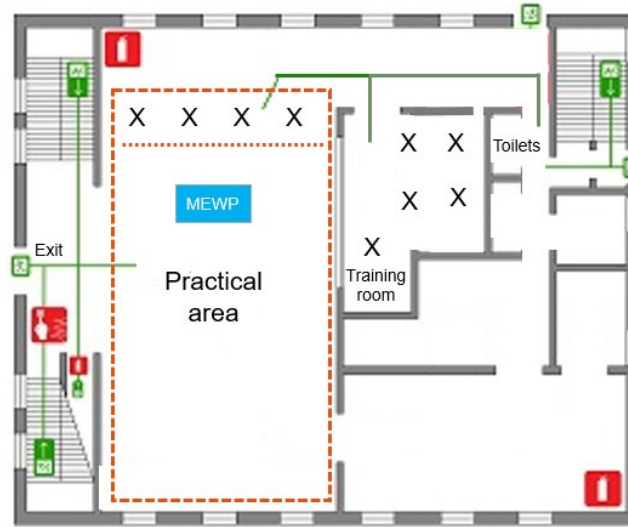
Preparing the training room

- Deep clean
- Sanitise materials and PPE
- Plan and mark transitions
- Group photograph
- Sanitisation stations



→ Ensure 2 metre social distancing:

- In the training room
- During transition
- In the MEWP, MCWP or Hoist practical area

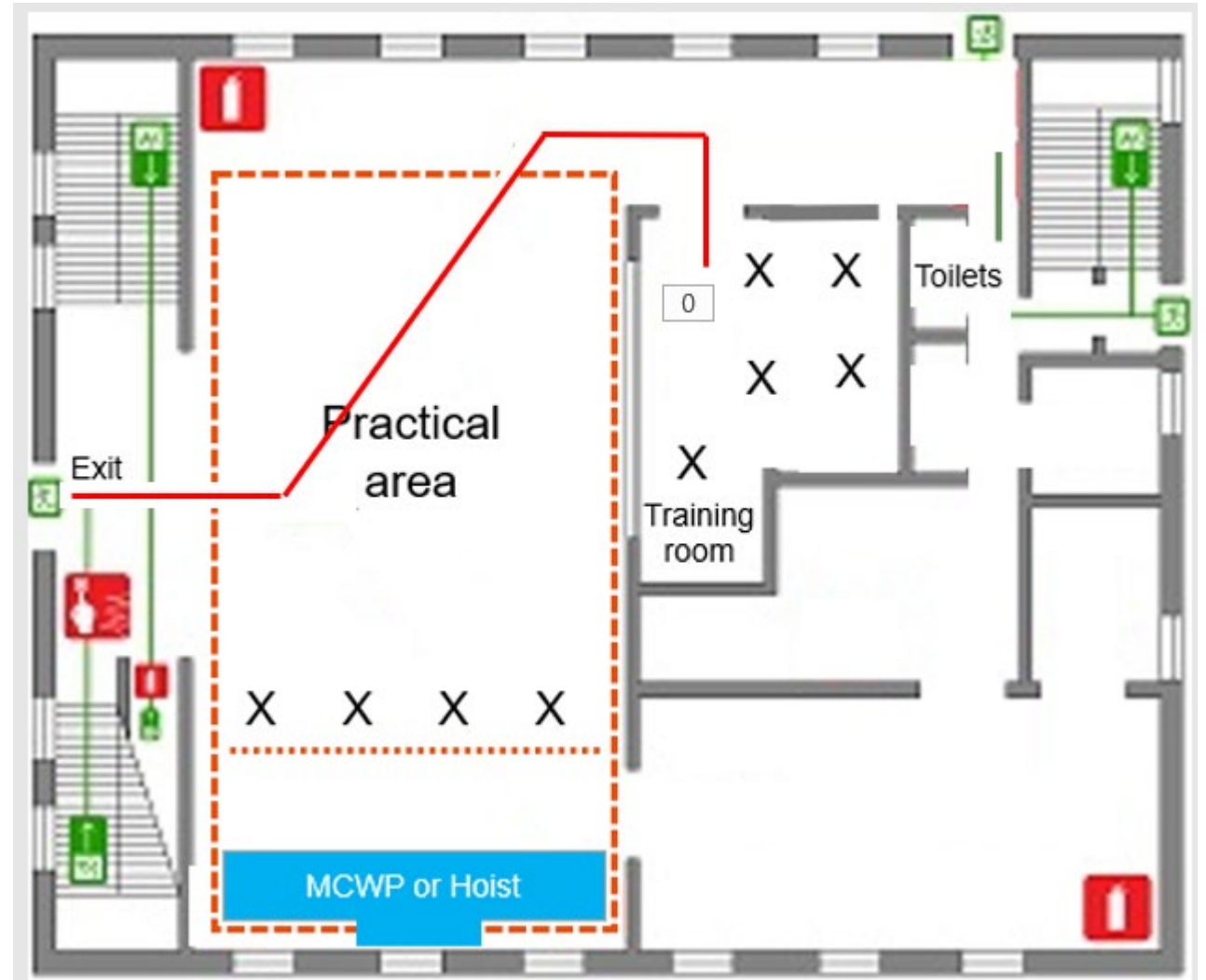


- Sanitiser should be available with the machine
- Candidates to sanitise before and after operating
- Candidates wait in predetermined designated area at 2 metre spacings
- PPE should not be shared



Completion of training

- Instructors will receive completed forms
- Check and exchange relevant information
- Candidates to leave following appropriate route while maintaining social distancing



- Unprecedented circumstance
- The 'new norm' for the foreseeable future
- Be aware of WHO/government guidance
- Follow logical hierarchy of control
- Involve all parties – informed workforce
- Social distancing & sanitisation practices

We are all in this together

Only by working together can we reduce the risk of COVID - 19 and stay safe



To promote the safe and effective use of powered access worldwide

IPAF is working to support our members and IPAF training candidates through these challenging times



WHAT IPAF DOES

TECHNICAL ADVICE AND INFORMATION

- Guidance documents and videos covering topics including harnesses, ground conditions and inspections
- Work of the IPAF Manufacturers' Technical Committee
- Magazines and publications including the IPAF Powered Access Rental Market Reports



SAFETY PROMOTION AND DEVELOPMENT

- Campaigns including Clunk Click and Spread the Load
- Accident reporting project
- Work of the IPAF Country and Regional Councils

PROMOTING THE POWERED ACCESS INDUSTRY

- IPAF Rental+ quality mark
- Conferences and events including the IPAF Summit and International Awards for Powered Access (IAPAs), Europlatform, the IPAF North American Convention, the IPAF Asia Conference, Regional Meetings and more
- Participating in major exhibitions in sectors such as access, rental, construction, and health and safety



INFLUENCING AND INTERPRETING LEGISLATION AND STANDARDS

- Developing standards including European EN standards, US ANSI standards, Canadian CSA standards, ISO standards
- Monitoring international regulations that govern equipment use
- Working with health and safety authorities worldwide

MANAGEMENT AND OPERATOR TRAINING PROGRAMMES

- Internationally recognised PAL Card for trained operators
- Backed up by auditing and quality control
- Professional Development Seminars for instructors



Thank you for listening



www.ipaf.org